

Campus Café Installation Guide

Overview:

The Campus Café* installation guide is used to assist with the installation and configuration of the necessary files needed to successfully install and utilize Campus Café's web server and client applications. This process is broken into four parts: Assumptions, Pre-Campus Café installation steps, installing Campus Café web server (Part 1), and installing Campus Café client application (Part 2).

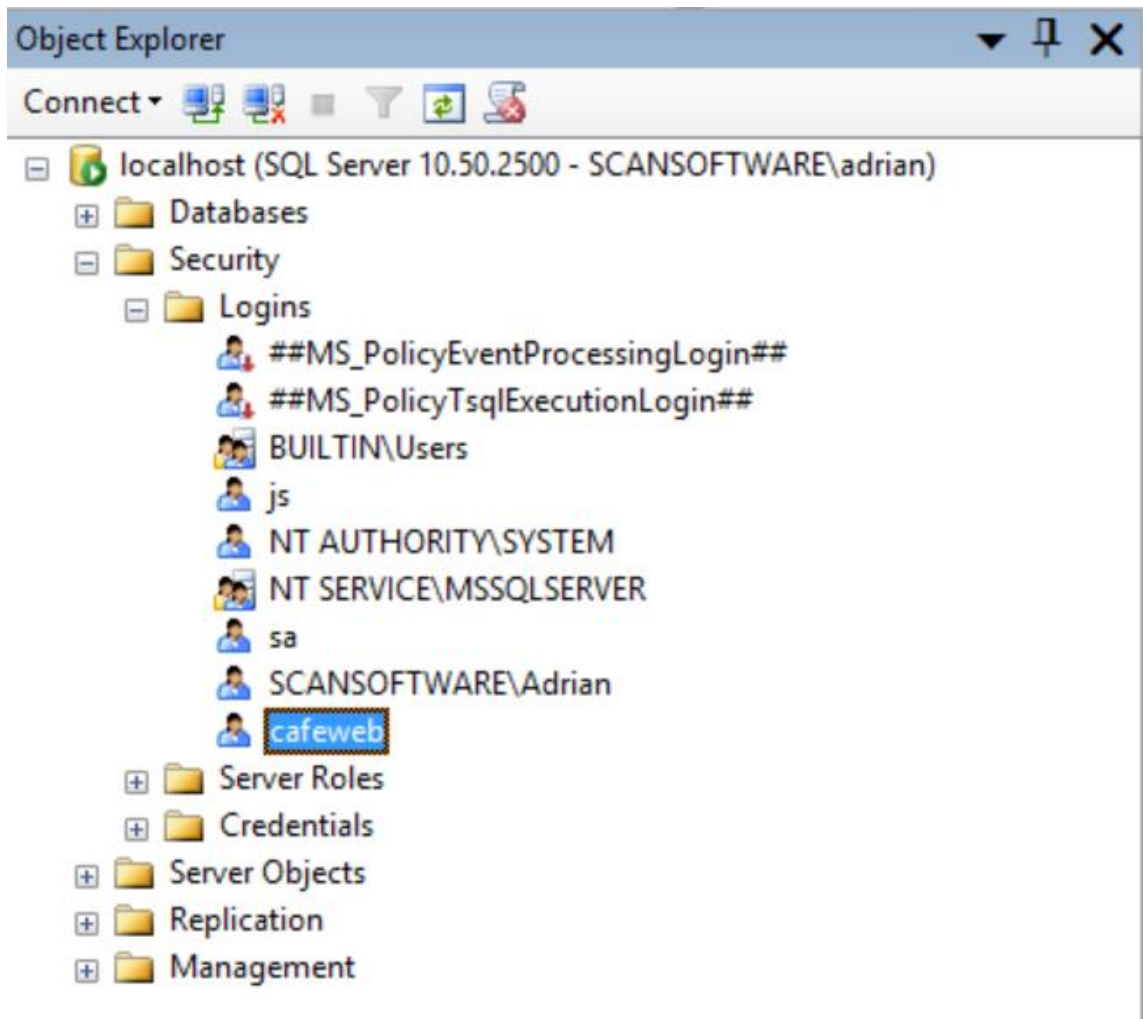
Assumptions:

- Tomcat 8.0.x is installed on a standalone server. We recommend installing as a 64-bit service.
 - See - <https://tomcat.apache.org/tomcat-8.0-doc/setup.html#Windows>
- MS SQL Server is installed. We recommend 2008 R2 64 bit.
- Working knowledge of MS SQL Server administration.
- Java server JRE (64-bit) is installed. Java 8 update 91 is the currently supported version as of this writing. This is for both the client and webserver. Use Tomcat8w.exe's Java tab to point to the installed JRE if necessary.
- Installation files have been obtained from Scan Business Systems. Installation files needed will be:
 - Campus Café web server. Contact Scan for latest version
 - CafeInstaller-5.0.exe (full installer for client server app)
 - Cafeupdate.xxxx.exe (where "x" is the latest update version)

Pre-Campus Café Installation Steps:

Downloads for all versions are provided to customers via our website. Check with your Campus Café support analyst for the latest recommended version for installation. For new installations, download from our support site and restore the scanfilev5 database using Microsoft SQL Server Enterprise Manager. Once the scanfilev5 database has been restored please add a login user with the name of cafeweb and a password. This user will be used in this documentation as an example. Your institution can create whatever username you'd like to use that is meaningful to you. Do not use the 'js' account. The use of this username and password will be to connect the java application webserver to the SQL server database. Any username and password will work as long as the db.properties file and the SQL account are configured properly.

Example SQL Login Account



To perform this task, please right-click on login under the security folder and select New Login. The screenshot below illustrates the New Login properties:

- Enter cafeweb as the name.
- Select SQL Server Authentication
- Enter a password
- Select scanfilev5 as the default Database

Login - New

Select a page: General, Server Roles, User Mapping, Securables, Status

Script Help

Login name: Search...

☐ Windows authentication

☒ SQL Server authentication

Password:

Confirm password:

☐ Specify old password

Old password:

☐ Enforce password policy

☐ Enforce password expiration

☐ User must change password at next login

☐ Mapped to certificate

☐ Mapped to asymmetric key

☐ Map to Credential Add

Mapped Credentials

Credential	Provider
------------	----------

Remove

Default database:

Default language:

Connection

Server: localhost

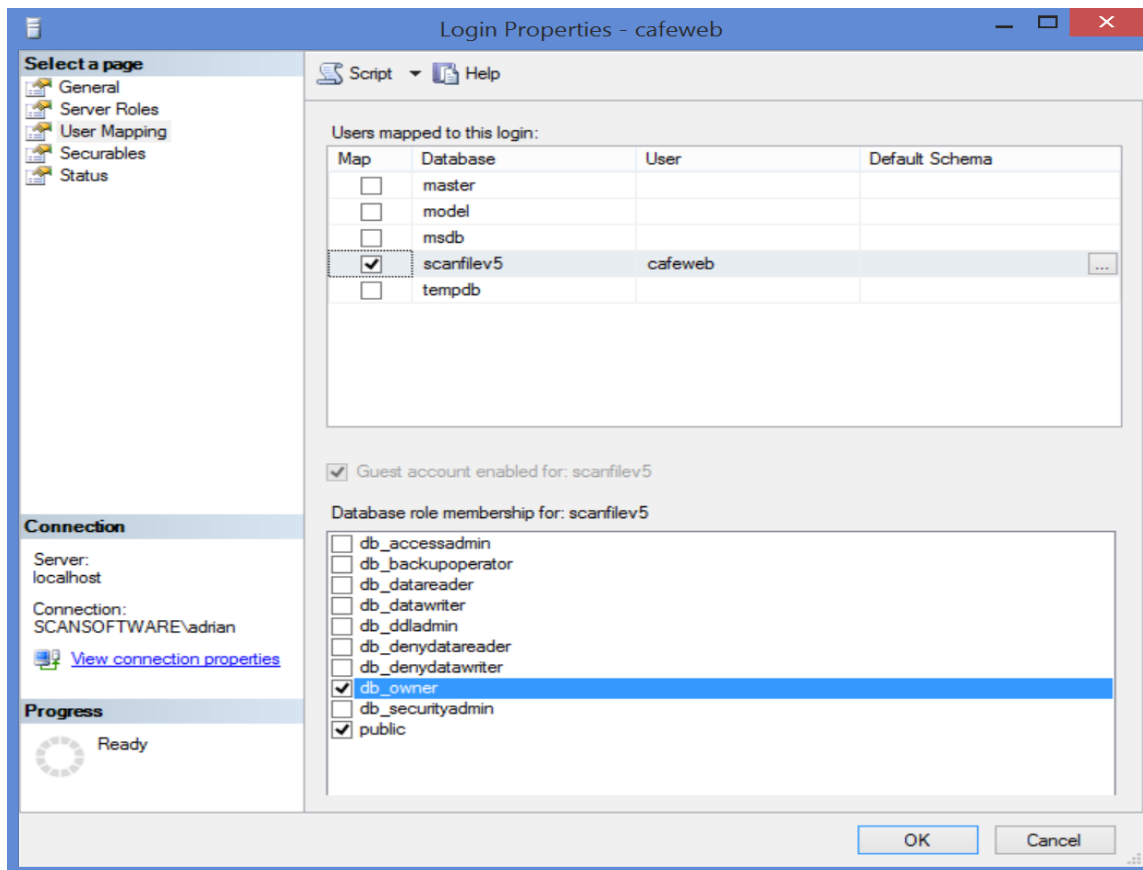
Connection: SCANSOFTWARE\adrian

[View connection properties](#)

Progress

Ready

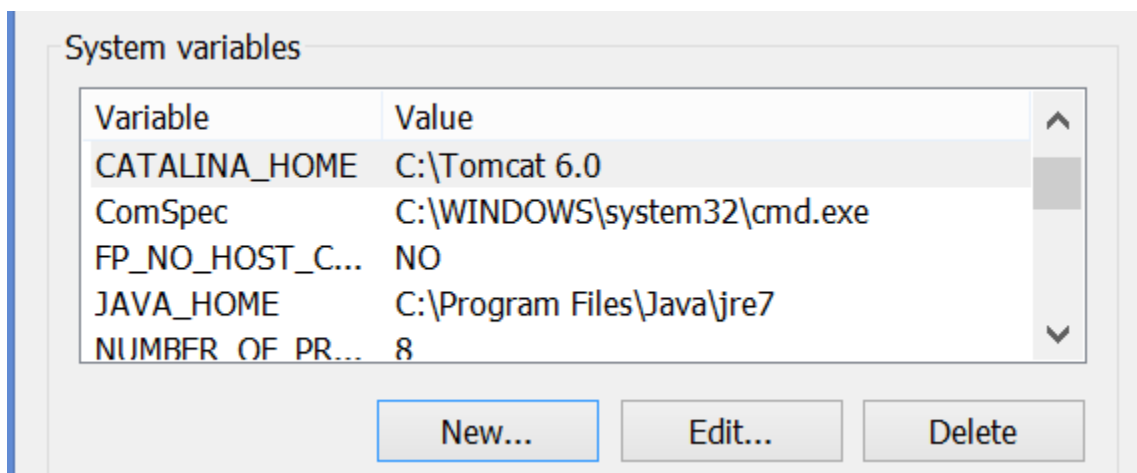
Save this new login. Then go back in to edit the credentials (right click cafeweb user and select properties). Select the user mapping page from the top left and add the scanfilev5 database with the roles of 'public' and 'db_owner' as seen below.



After clicking OK the new user will have been configured in the Login security folder on SQL server.

For installation steps for installing Tomcat please review the detailed instructions on the [Apache Tomcat Official site](#). Please make note of the version at the beginning of this document that are supported by Scan Business Systems.

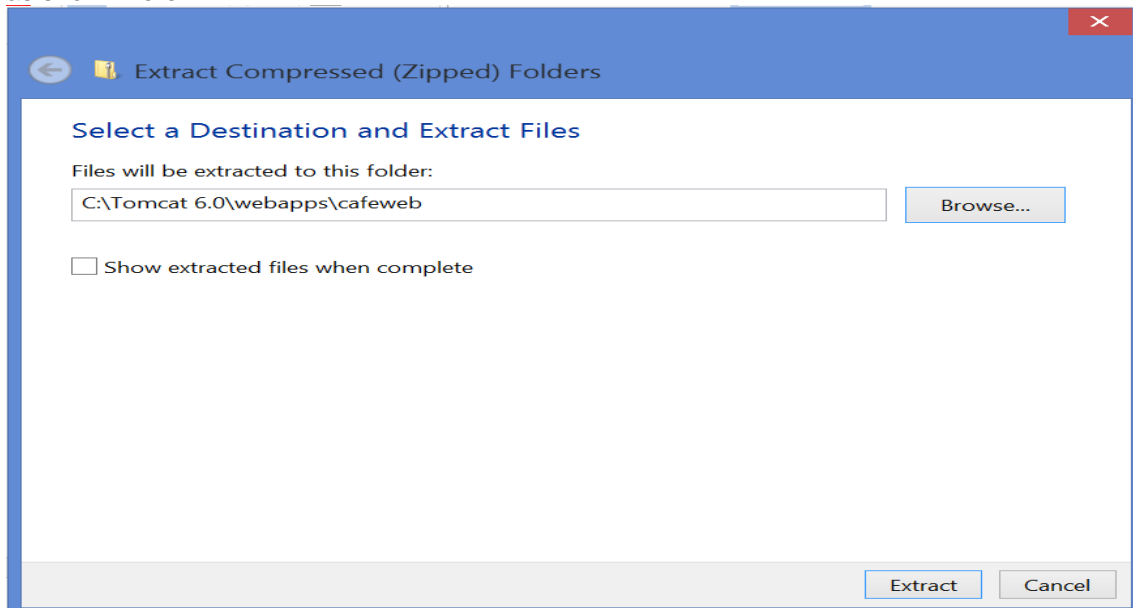
It is recommended that a CATALINA_HOME environment variable and JAVA_HOME environment variable be configured on the web server as shown in this screen shot. Your java and tomcat environment variables file paths may differ based on where you installed on your server.



Once the database has been restored and the appropriate login user has been added, stop the Apache Tomcat service if it is running.

Part 1- Campus Café Web Server Installation:

In the %CATALINA_HOME%\webapps directory, please create a new folder and name it cafeweb. Once the cafeweb folder has been created, you will need to unzip the latest Cafeweb build files to this location as shown here.

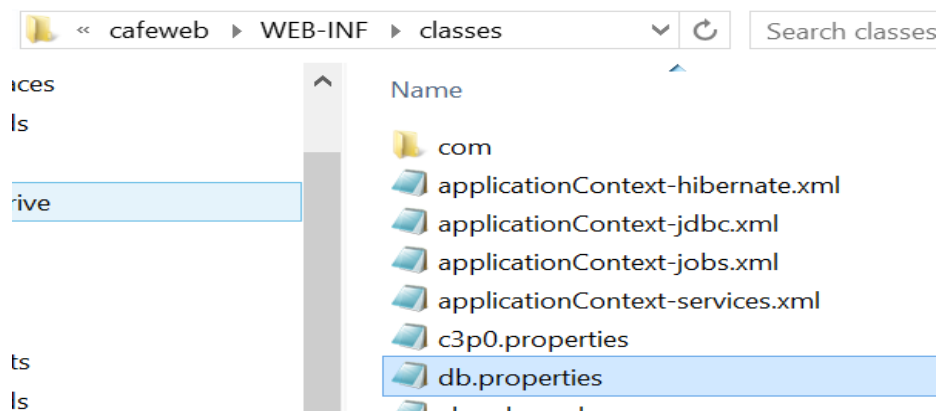


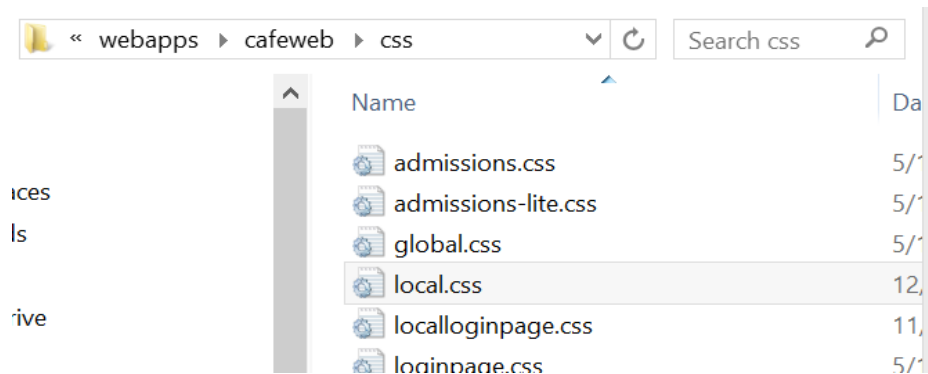
If this is an update to an existing installation, then be sure to overwrite all existing files. The updater will not overwrite your local.css or your db.properties files. It will also not overwrite any custom images or other files you've added to your existing installation provided they do not share the same file name as any of the source installation files.

The db.properties and local.css files need to be added manually to the installation. You will receive a db.properties and local.css file from your Campus Café support analyst. Once you have these two files they go in these respective locations:

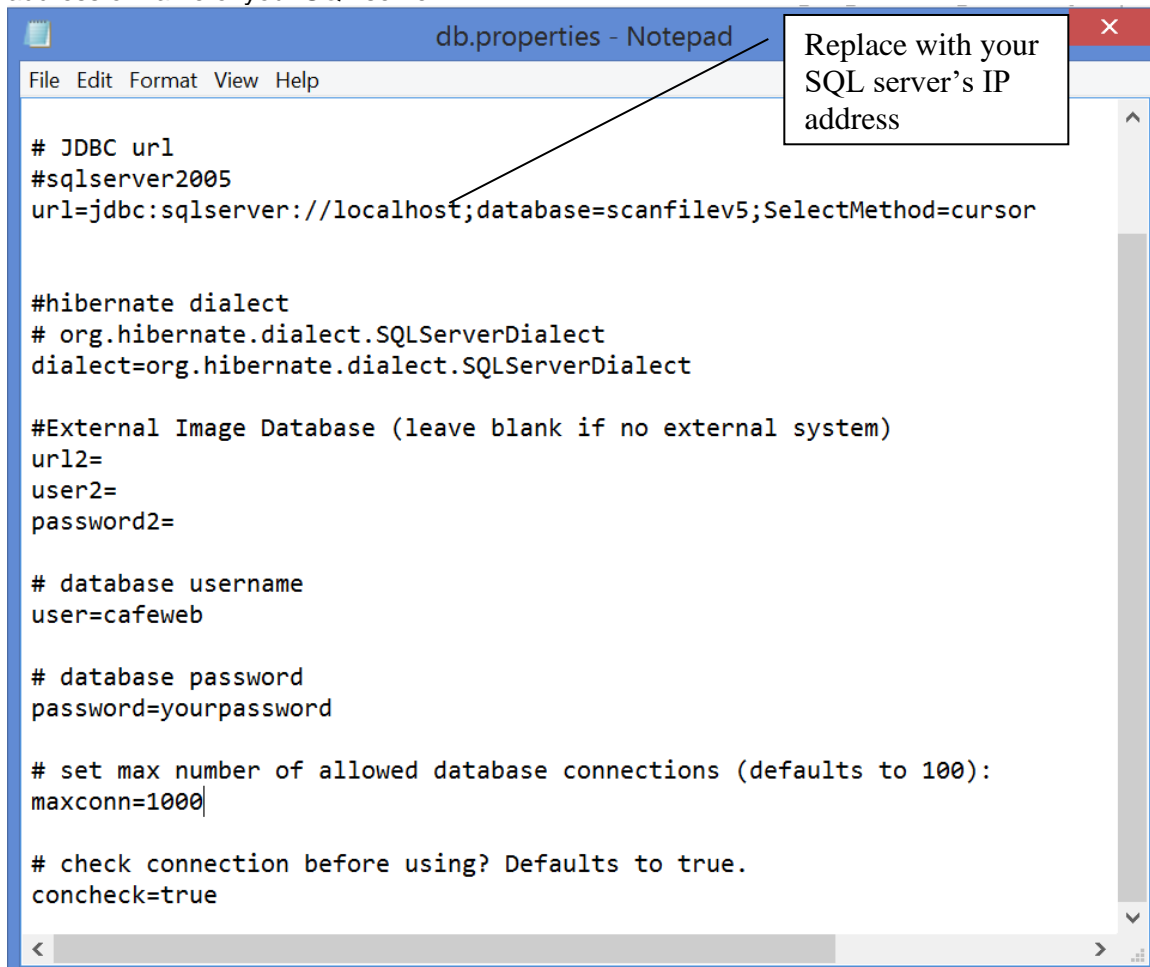
db.properties - %CATALINA_HOME%\webapps\cafeweb\WEB-INF\classes

local.css - %CATALINA_HOME%\webapps\cafeweb\css





Below is a sample screen shot of the db.properties file. Your URL path and username/password settings will be different based on your installation. Typically "localhost" in the URL is replaced with the IP address or name of your SQL server.



Once the db.properties file has been configured, you may start the Apache Tomcat service.

Test the installation by entering the following URL in the web browser's address bar:

<http://localhost/cafeweb/login>

A port may have to be defined if you are not port forwarding to port 80 (see Tomcat install instructions via Apache Tomcat website).

Please substitute localhost with the correct servername or IP address in your db.properties file. The local.css file does not have to contain anything but it must be present for the application to properly load.

Upon successful installation and configuration the login page for CafeWeb should render. The illustration below depicts the login page for Campus Café's web portal application.

Login Screen

← → ↻ localhost/cafeweb/login

CAMPUSCAFÉ

This secure site will allow you access to your records.
Please remember to log out when you are finished to protect your privacy and that of other students.

[Forgot Password?](#)

User Name (your email address) PASSWORD

Information

Welcome to Needham Academy

Urban Planning Center
Needham University
has

Announcements

Registrar's Office Announcements for Fall 2011
Pre-Registration for the Fall 2011 term will begin on April 15 2011. YOU may log on to the Campus Cafe Student Information System anytime after midnight and select your classes. You must meet with your advisor prior to pre-registration and get approval for the upcoming term. If you have any questions, please call the Registrar's Office at 617-487-2111.

Department of Athletics - Upcoming Events
Please get your tickets early for the Needham University Crickets Football game against our archrival Folsom State Butterflies. There will be a rally on student quadrangle at 5pm this Friday in advance of this don't miss

You may log into this application by providing a username and password for a user that has an account. By default, the Campus Café analyst would provide a pre-existing user in the installation database that can be used initially as an admin. If you are using the scanfilev5 test database supplied to new clients, please use the following login credentials.

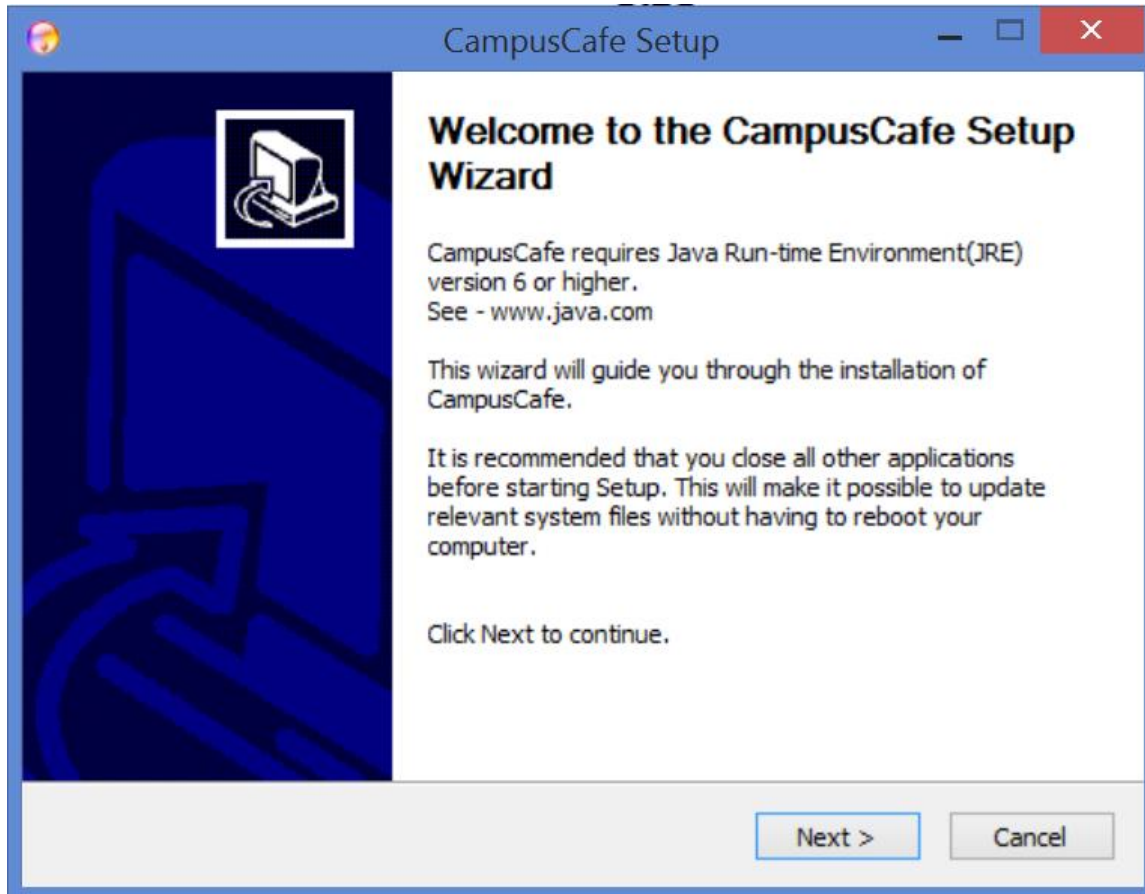
Student login:
Username: Holbrook
Password: Holbrook
Faculty login:
Username: Mingus
Password: Mingus

Notes: These usernames and passwords may or may not be included with your copy of the scanfilev5 database. Please contact Scan Business Systems to help you set up the first login account if these do not work.

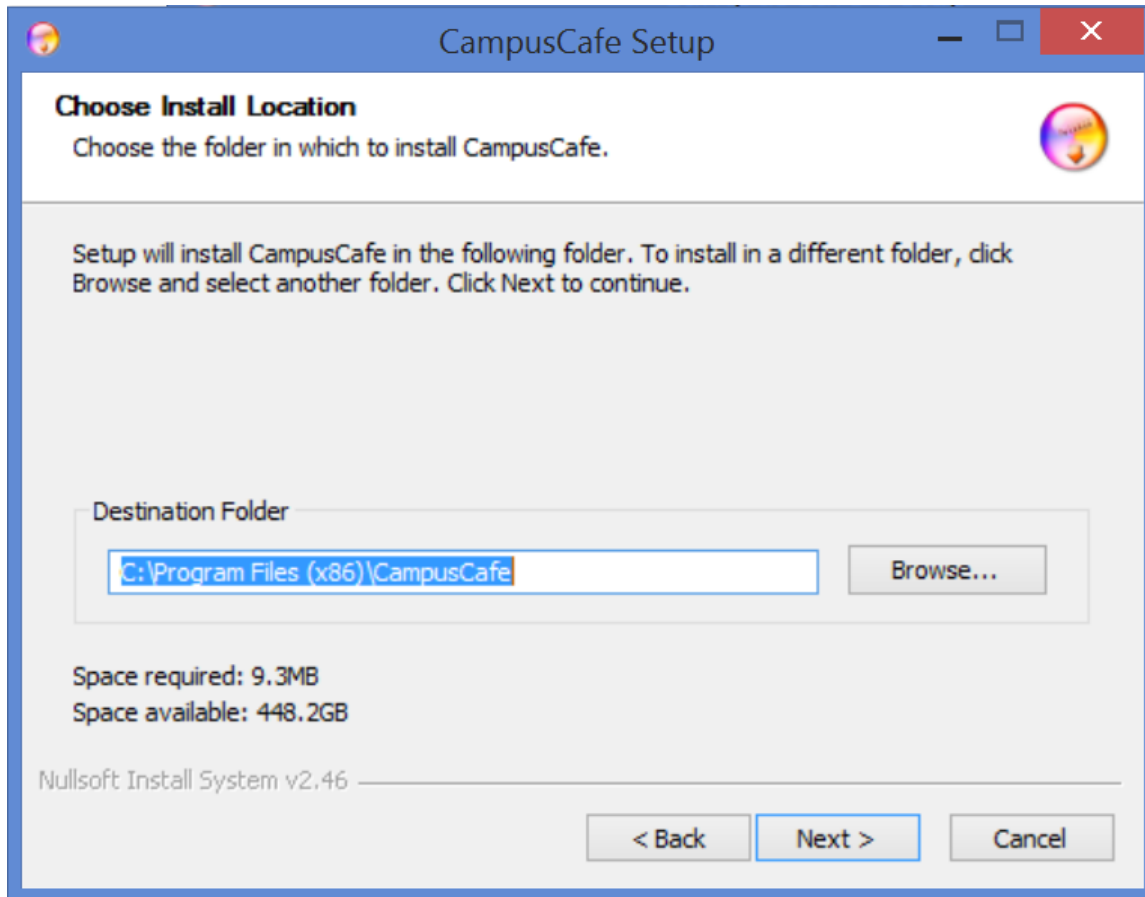
Additional Notes: If this page is not displayed please verify in Enterprise Manager that the cafeweb database user (or the user defined in the db.properties file) for SCANFILEV5 database has the public and owner roles.

Part 2- Campus Café Client Installation:

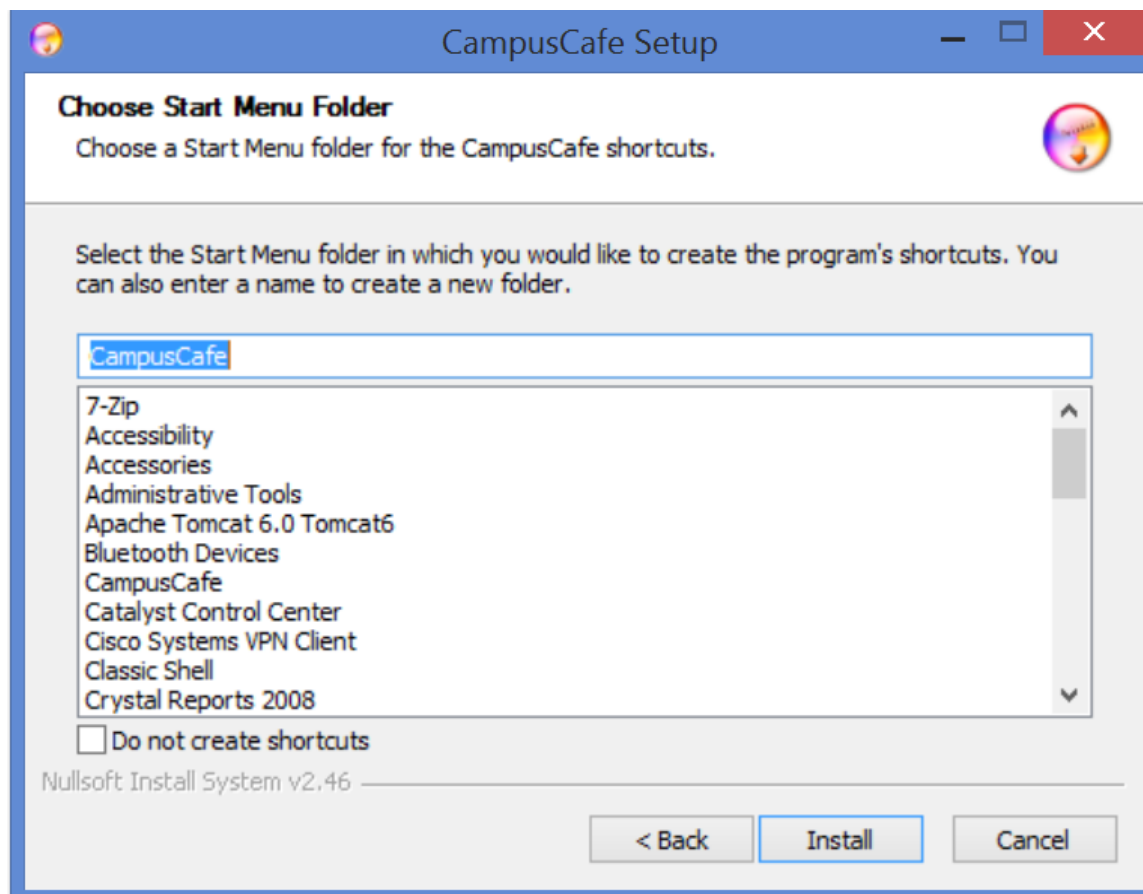
Please execute the CafeInstaller-5.0.exe file to install Campus Café. The image below depicts the program preparing to install screen, which is displayed when the CampusCafe.exe has been executed. Note you will have to have previously installed Java 6 or higher (7 recommended) prior to installation.



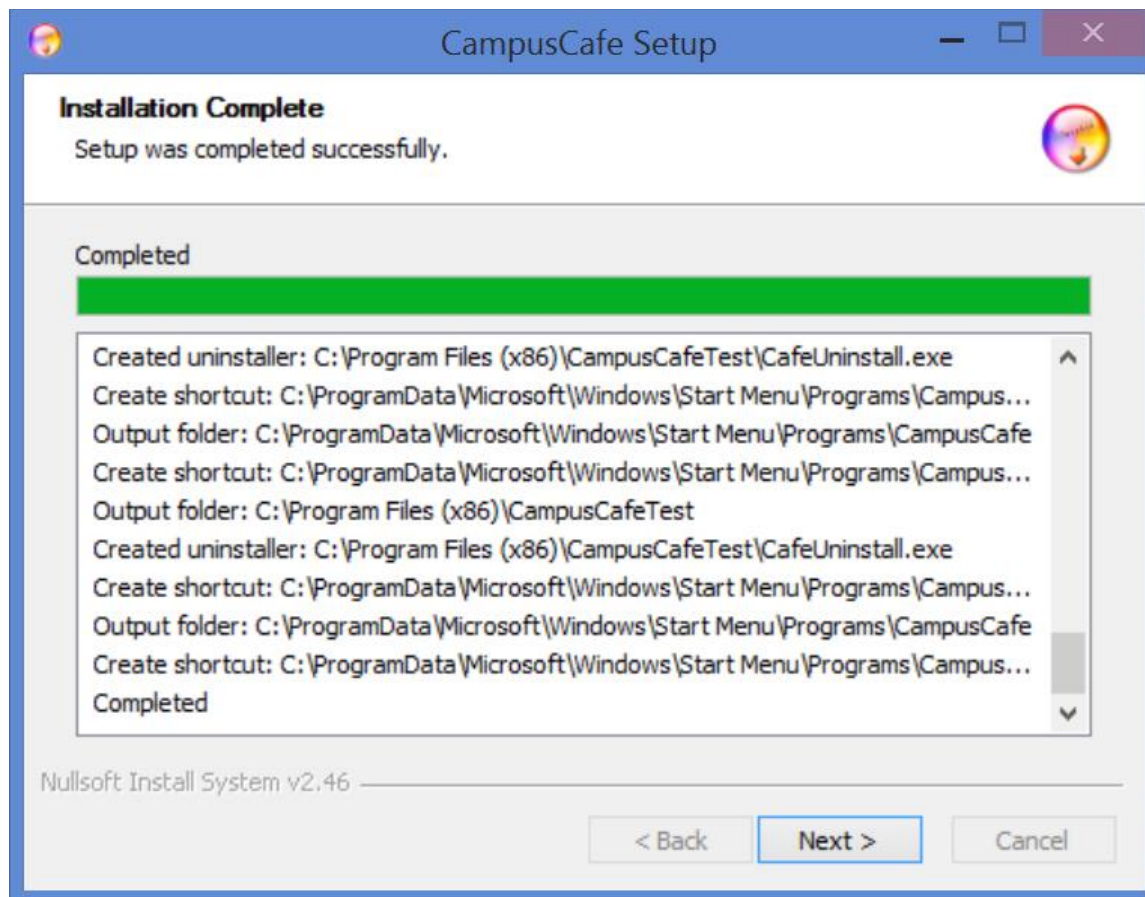
CampusCafe will install in the CampusCafe folder in the program files (x86) directory located on the root drive (c:) by default but you can change the defaults if you choose. Subsequent updates will have to be changed as well as the updater looks to the default location unless changed. Click the 'Next' button to continue.



You can select you start menu folder and opt out to create shortcuts on the next screen



Select Install



Once installation is complete select Next

CampusCafe Setup

Configure CampusCafe
Database Properties

Please select a Database option

☒ SQL Server

☐ DB2

AS400:

Database Server:

Database Name:

Cafe School Title:

Nullsoft Install System v2.46

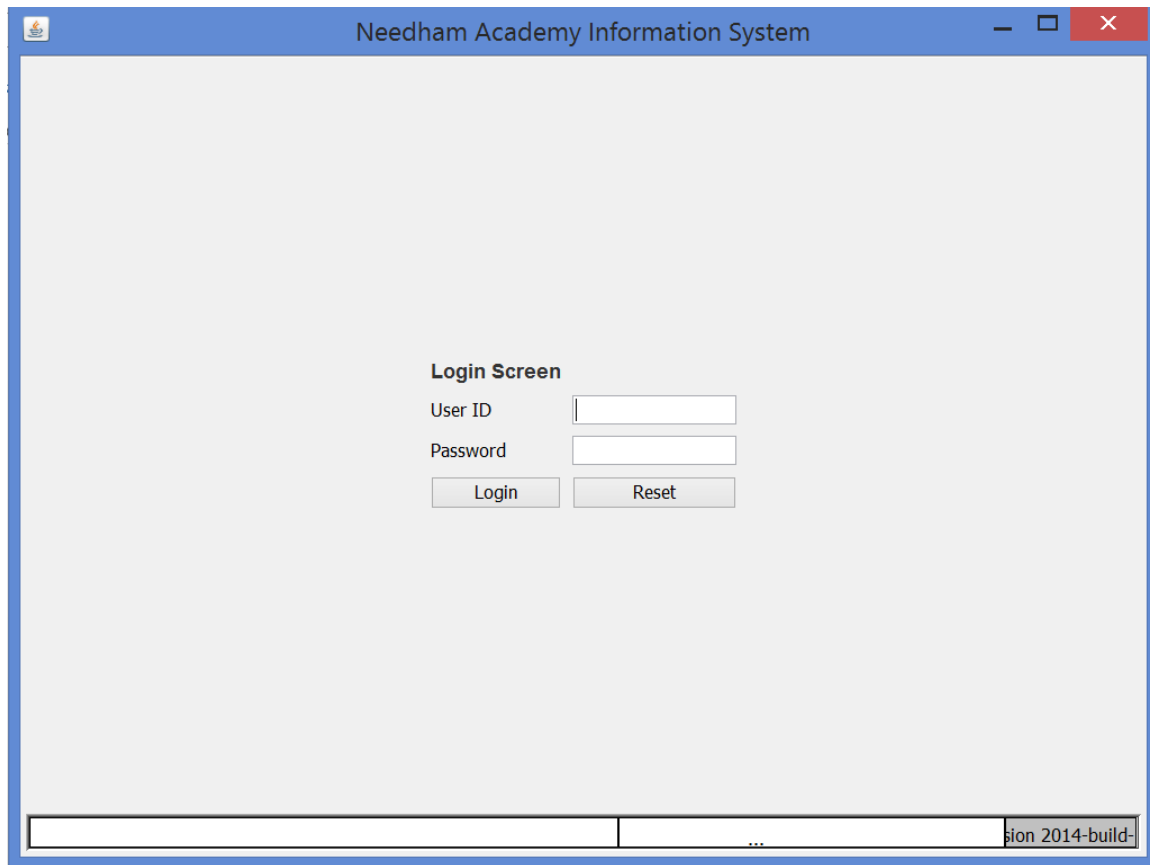
< Back Next > Cancel

On this final screen, fill in your db server name or IP address (this will set the value in the jdbc URL in the appinfo.properties file) and key in a school name. Do not change the database name unless this is a test system with a different database name.

Once the base installer is complete, repeat these steps with the updater program (supplied by Campus Café analyst). The version updater will install to the same directory and set the version.

Once the CampusCafe application has been executed from the start menu, the login screen should render.

CampusCafe login screen



The screenshot shows a web browser window titled "Needham Academy Information System". The main content area is light gray and contains a "Login Screen" section. This section includes two input fields: "User ID" and "Password". Below these fields are two buttons: "Login" and "Reset". At the bottom of the window, there is a status bar with a text field containing "...ion 2014-build-".

Login Screen

User ID

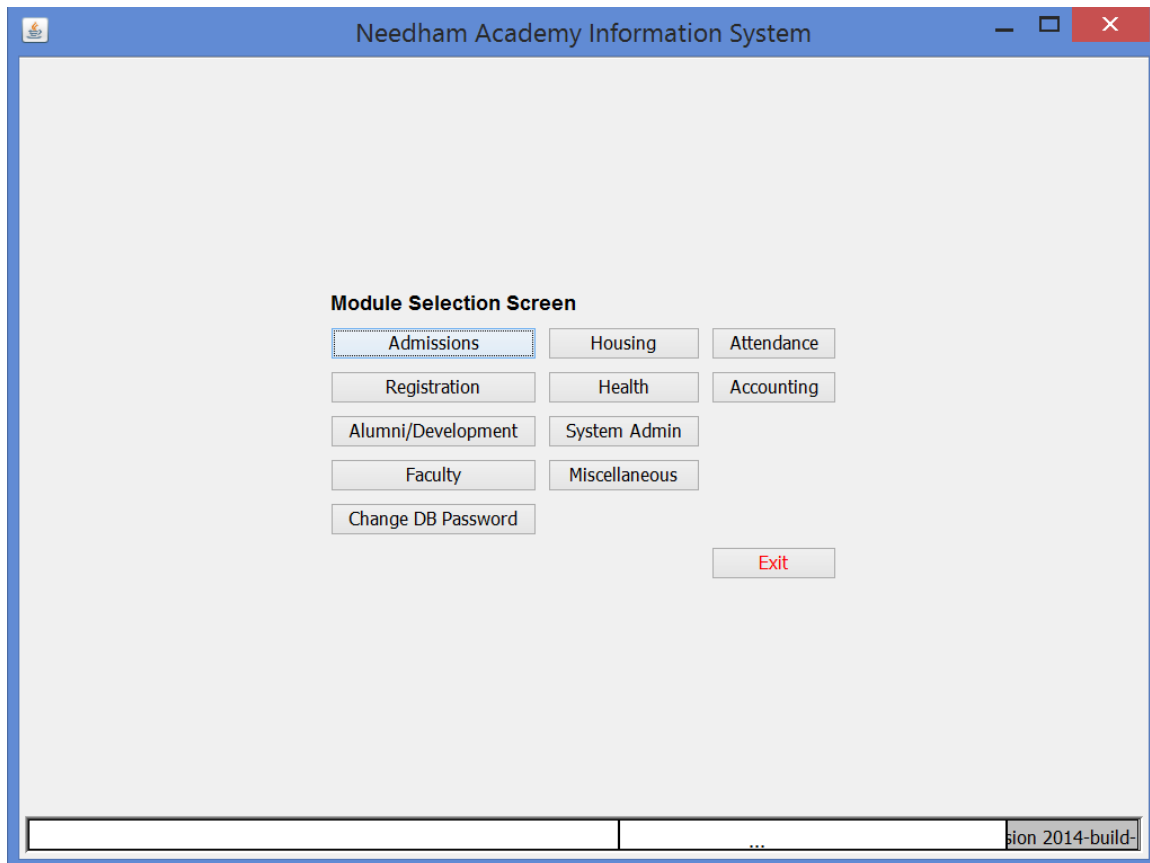
Password

...ion 2014-build-

You may test logging in by entering the database user. An admin login needs to be created and should be supplied in your scanfilev5 database supplied to you by your Campus Café analyst or you can use an existing account if current customer.

Once logged into the CampusCafe application the Modules Selection Screen will appear.

Modules Selection Screen



Campus Cafe has been successfully installed